

Goat Anti-SCAP2 / PRAP Antibody
Peptide-affinity purified goat antibody
Catalog # AF1962a**Specification**

Goat Anti-SCAP2 / PRAP Antibody - Product Information

Application	WB, E
Primary Accession	O75563
Other Accession	NP_003921 , 8935
Reactivity	Human
Predicted	Mouse, Rat, Dog
Host	Goat
Clonality	Polyclonal
Concentration	100ug/200ul
Isotype	IgG
Calculated MW	41217

Goat Anti-SCAP2 / PRAP Antibody - Additional Information**Gene ID** 8935**Other Names**

Src kinase-associated phosphoprotein 2, Pyk2/RAFTK-associated protein, Retinoic acid-induced protein 70, SKAP55 homolog, SKAP-55HOM, SKAP-HOM, Src family-associated phosphoprotein 2, Src kinase-associated phosphoprotein 55-related protein, Src-associated adapter protein with PH and SH3 domains, SKAP2, PRAP, RA70, SAPS, SCAP2, SKAP55R

Dilution

WB~~1:1000

E~~N/A

Format

0.5 mg IgG/ml in Tris saline (20mM Tris pH7.3, 150mM NaCl), 0.02% sodium azide, with 0.5% bovine serum albumin

Storage

Maintain refrigerated at 2-8°C for up to 6 months. For long term storage store at -20°C in small aliquots to prevent freeze-thaw cycles.

Precautions

Goat Anti-SCAP2 / PRAP Antibody is for research use only and not for use in diagnostic or therapeutic procedures.

Goat Anti-SCAP2 / PRAP Antibody - Protein Information**Name** SKAP2

Synonyms PRAP, RA70, SAPS, SCAP2, SKAP55R

Function

May be involved in B-cell and macrophage adhesion processes. In B-cells, may act by coupling the B-cell receptor (BCR) to integrin activation. May play a role in src signaling pathway.

Cellular Location

Cytoplasm.

Tissue Location

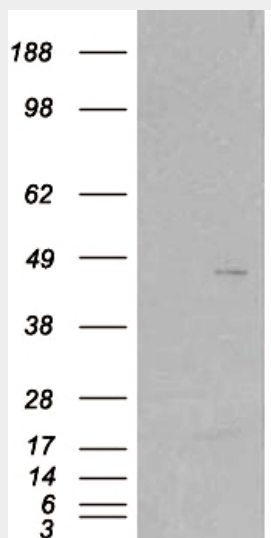
Ubiquitously expressed. Present in platelets (at protein level).

Goat Anti-SCAP2 / PRAP Antibody - Protocols

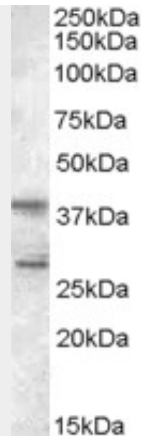
Provided below are standard protocols that you may find useful for product applications.

- [Western Blot](#)
- [Blocking Peptides](#)
- [Dot Blot](#)
- [Immunohistochemistry](#)
- [Immunofluorescence](#)
- [Immunoprecipitation](#)
- [Flow Cytometry](#)
- [Cell Culture](#)

Goat Anti-SCAP2 / PRAP Antibody - Images



HEK293 overexpressing SKAP2 (RC206119) and probed with AF1962a (mock transfection in first lane), tested by Origene.



AF1962a (0.5 µg/ml) staining of Jurkat lysate (35 µg protein in RIPA buffer). Primary incubation was 1 hour. Detected by chemiluminescence.

Goat Anti-SCAP2 / PRAP Antibody - Background

The protein encoded by this gene belongs to the src family kinases. This protein is similar to the src kinase associated phosphoprotein 1. It is an adaptor protein that is thought to play an essential role in the src signaling pathway in various cells. It inhibits PTK2B/RAFTK activity and regulates alpha-synuclein phosphorylation.

Goat Anti-SCAP2 / PRAP Antibody - References

Variation at the NFATC2 Locus Increases the Risk of Thiazolinedinedione-Induced Edema in the Diabetes REduction Assessment with ramipril and rosiglitazone Medication (DREAM) Study. Bailey SD, et al. Diabetes Care, 2010 Jul 13. PMID 20628086.

In silico replication of the genome-wide association results of the Type 1 Diabetes Genetics Consortium. Qu HQ, et al. Hum Mol Genet, 2010 Jun 15. PMID 20378605.

Gene-centric association signals for lipids and apolipoproteins identified via the HumanCVD BeadChip. Talmud PJ, et al. Am J Hum Genet, 2009 Nov. PMID 19913121.

Identification of SH3 domain interaction partners of human FasL (CD178) by phage display screening. Voss M, et al. BMC Immunol, 2009 Oct 6. PMID 19807924.

Genome-wide association study and meta-analysis find that over 40 loci affect risk of type 1 diabetes. Barrett JC, et al. Nat Genet, 2009 Jun. PMID 19430480.